

M/V "ARBOL GRANDE"

OFFSHORE SUPPORT VESSEL



PRINCIPAL PARTICULARS

Length over all.....	94,28 m
Length between p.p.....	79,90 m
Breadth moulded.....	20,00 m
Depth main deck.....	9,50 m
Depth tween deck.....	6,50 m
Max. draft.....	7,00 m
Gross tonnage.....	5.530

EQUIPMENT FOR CARGO

MAIN CRANE

Make: TTS - Type..... GPCO 2000 - 6041
Max. lifting capacity: 60/25T at 14/25m and Aux. 15 T. 26m

SERVICE CRANE

Make: Hydralift Marine - Type..... KMCV 1301-2-16
Max. lifting capacity..... SWL 2 T at 16 m

MOON-POOL HATCH

Designed by..... TTS Ship's Equipment
Size..... 7,20 x 7,20 m
With electro-hydraulic power pack Make..... Neuwalme

PROVISION CRANE

Make: Hydralift Marine - Type..... MCV 886-2-8
Max. lifting capacity..... SWL 2 T at 8 m

CAPACITIES

Fuel-oil.....	1.379,59 m ³
Fresh water.....	410,84 m ³
Ballast water.....	2.472,28 m ³

SHIP'S SYSTEMS

Automation System..... AKER/Stadt Automation
Electric installation company..... Isolux
Ventilation/Air conditioning system..... Novenco
Accommodation..... Maritime Montering/Regenasa

CLASS

Det norsk Veritas + 1 A 1, SF, HELIDK-SH, DYNPOS. AUTR, DK (+), EO

ACCOMMODATION

Total number of crew..... 199 persons

DECK MACHINERY

ANCHOR/MOORING WINCH (2) Electro-hydraulic
Make: Ship's Equipment - Type..... 50U3-80 KN
CAPSTAN (2) Electro-hydraulic
Make: Ship's Equipment - Type..... EHCV-50
Nominal force: 50 KN - Max. speed: 10m/min

MANOEUVRING SYSTEMS

AZIMUTH THRUSTER (2)

Make: Rolls-Royce - Type..... US 255-S600
Power..... 2400 Kw at 1200 r.p.m.
Gear reduction..... 5,286:1
Motor make..... Alconza
Propeller diam..... 2700 mm

SWING-UP THRUSTER FWD (1)

Make: Rolls-Royce - Type..... TCNS 83/M-220
Power..... 1200 Kw at 1800 r.p.m.
Gear reduction..... 7,63:1
Motor make..... Alconza
Propeller diam. 2200 mm. - 4 blades - 236 r.p.m.

TUNNEL THRUSTER (2)

Make: Rolls Royce - Type..... 250 TV-SS
Power..... 883 Kw at 1200 r.p.m. Gear
reduction..... 4,54:1
Propeller diam. 1960 mm. - 4 blades - 264 r.p.m.

DYNAMIC POSITIONING SYSTEM

Make: Kongsberg Simrad - Type..... SPD21

HARBOUR/EMERGENCY GENERATOR

ENGINE

Make: Volvo Penta - Type..... TAMD165A
Power..... 428 Kw at 1800 r.p.m. with

GENERATOR

Make: Stamford - Type..... HCM534C1
Power..... 440V/60Hz, 450 KVA 590, 5A, 1800 r.p.m.

DIESEL ELECTRIC PROPULSION SYSTEMS

ENGINES (2)

Make: Wärtsilä - Type..... 6L26A
Power..... 1860 Kw at 900 r.p.m. with

GENERATOR (2)

Make: Alconza - Type..... NIR5680 A-8 LW
Power..... 2213 KVA at 900 r.p.m., 690V/60Hz, 1852 A

ENGINES (2)

Make: Wärtsilä - Type..... 8L26A
Power..... 2480 Kw at 900 r.p.m. with

GENERATOR (2)

Make: Alconza - Type..... NIR6378 A-8 LW
Power..... 2975 KVA at 900 r.p.m., 690V/60Hz, 2489 A

MACHINERY SYSTEMS

PUMPS

Make..... Azcue

BILGE WATER SEPARATOR

Make: Detegasa - Type..... Delta Ows-2

STARTING AIR COMPRESSOR (2)

Make: Sperre - Type..... HL2/105
Capacity..... 47 m³/h each

SERVICE AIR COMPRESSOR (1)

Make: Tamrotor - Type..... EMH 35-8 EANA
Capacity..... 5,26 m³/min

LUB-OIL SEPARATOR (2)

Make: Alfa Laval - Type..... MMPX 404 SGP-11
Capacity..... 2 m³/h each

FUEL-OIL SEPARATOR (2)

Make: Alfa Laval - Type..... MMPX 404 SGP-11
Capacity..... 2 m³/h

FRESH WATER GENERATORS (3)

Make: Aquamar - Model: 25/2 - Cap: 25 T/day each

INCINERATOR (1)

Make: Detegasa - Type..... DELTA IRL-50
Capacity..... 500.000 Kcal/h

ANTI-HEELING SYSTEM (1)

Make: Framo - Type: RBP 250-315010F - Flow: 600m³/h

TANK SOUNDING SYSTEM

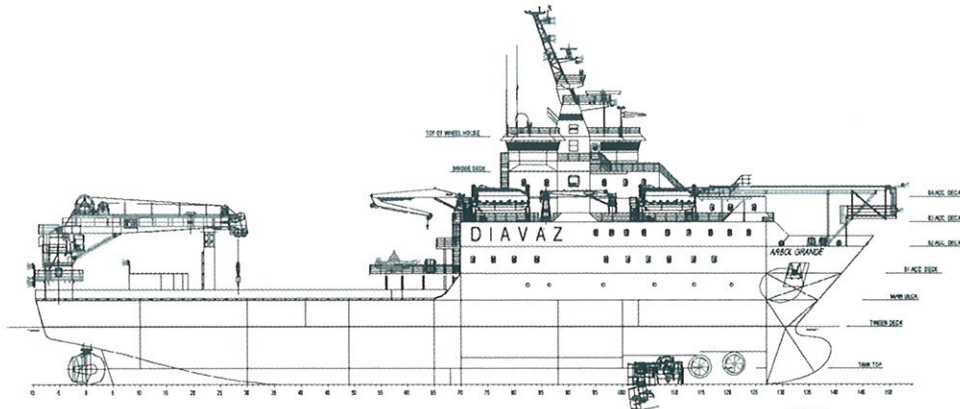
Make: Rolls-Royce - Type UMAS V - Electropneumatic



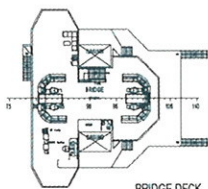
MetalSHIPS
& DOCKS, S.A.U.

M/V "ARBOL GRANDE"

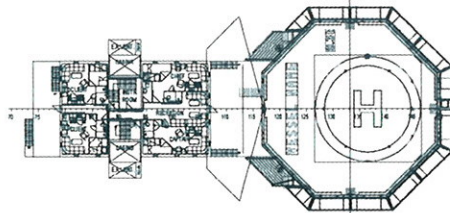
OFFSHORE SUPPORT VESSEL



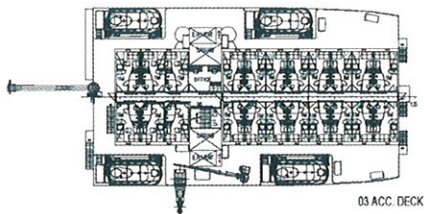
PROFILE



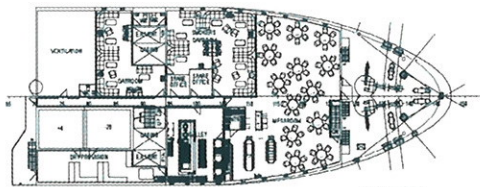
BRIDGE DECK



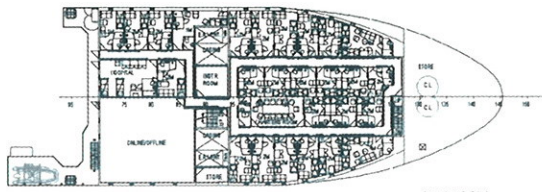
04 ACC. DECK



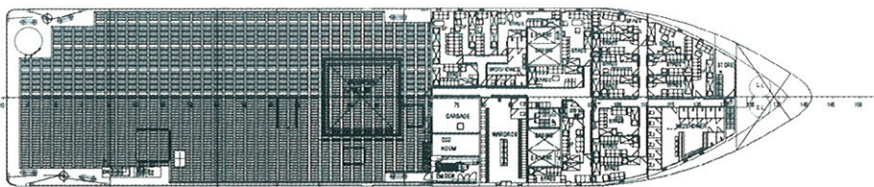
03 ACC. DECK



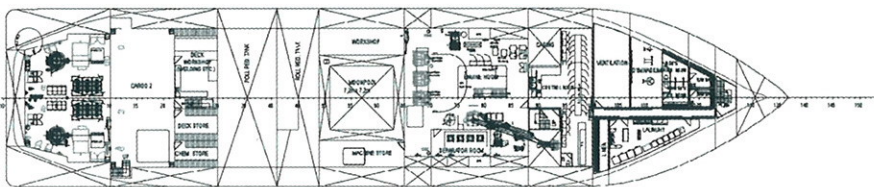
02 ACC. DECK



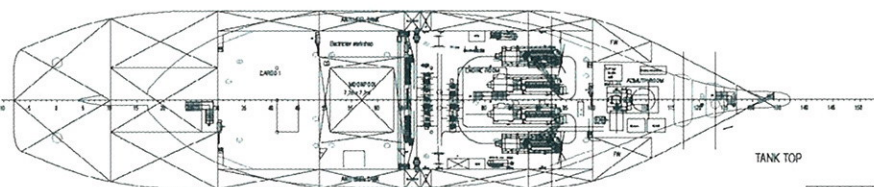
01 ACC. DECK



MAIN DECK



TWEEN DECK



TANK TOP

PRINCIPAL PARTICULARS
 LENGTH OVER ALL: 94,28 M
 LENGTH BETWEEN PERP.: 79,80 M
 BREADTH MOULDED: 20,00 M
 DEPTH MAIN DECK: 9,50 M
 DEPTH TWEEN DECK: 6,50 M
 MAX DRAFT: 7,00 M
 FRAME SPACING: 0,80 M
 ACCOMODATION FOR 199 PERS.
 29 x 1 MAN CABINS
 25 x 2 MAN CABINS
 20 x 6 MAN CABINS

CLASS
 *1A1, SF, HELIDK-SH, DYNPOS-AUTR, DK(+), E0

GENERAL ARRANGEMENT		Scale	Sheet	Revision
Offshore Support Vessel <td>1:200</td> <td>01</td> <td>05.22.01</td>		1:200	01	05.22.01
SAW 2003 <td>Forma</td> <td>2/3</td> <td>10.24.01</td>		Forma	2/3	10.24.01
Project		S133/00-148		
W/ no		101		
Drawing no.		A818		
Rev		P		
Sheet		1 v 1		