

# "NORTH OCEAN 103" ("APACHE II")

CONSTRUCTION UMBILICAL VESSEL



## PRINCIPAL PARTICULARS

Length over all	133,60 m.
Length between p.p.	120,40 m.
Breadth moulded	27,00 m.
Depth main deck	9,70 m.
Depth tween deck	6,20 m.
Max. Draft	6,50 m.
Gross tonnage	7.000

## CAPACITIES

Deck Area	2.000 m <sup>2</sup>
Fuel-Oil	1.200 m <sup>3</sup>
Fresh Water	1.000 m <sup>3</sup>
Ballast Water	4.000 m <sup>3</sup>

## CLASS

Det Norske veritas+1A1, HELIDECK,DYNPOS-AUTR, EO, DK, (+), EO, CLEAN, CONF(V3) NAUT-OSV

## ACCOMMODATION

Total number of crew	120 persons
----------------------	-------------

## EQUIPMENT FOR CARGO

Pipe Laying Equipment

DECK CRANE (2)	
Make: TTS Type	GP-80-2-12
Max. Lifting capacity	12 T.

MOON POOL HATCH

Designed by	TTS Ships Equipment
Size	7,20x7,20m.
With electro-hydraulic power pack	Make..Neuwalme

## DECK MACHINERY

Anchor Mooring Winch (2) Electro-hydraulic	
Make	Carral
Capstan (2) Electro-Hydraulic	
Make	Carral

## MANOEUVRING SYSTEM

AZIMUTH THRUSTER (2)	
Make: Rolls-Royce-type	AZP-120
Power	3.500 Kw.

TUNNEL THRUSTER (2)	
Make: Rolls-Royce-Type	TT-2400
Power	1.500 Kw.

SWING-UP THRUSTER (1)	
Make: Rolls-Royce-Type	TCNS 92/62
Power	1.500 Kw.

## DYNAMIC POSITIONING SYSTEM

Make: Kongsberg Simrad-type	DPC21
-----------------------------	-------

## DIESEL ELECTRIC PROPULSION SYSTEMS

ENGINES (4)	
Make:Wartsila-Type	9R32
Power	3.300 Kw at 720 r.p.m.

GENERATOR (4)	
Make:Alconza-Type	NIR 7185A-10LW

## HARBOUR/EMERGENCY GENERATOR

ENGINE	
Make:Mitsubishi-type	S6R-MPTA
Power	800 Kva.

GENERATOR	
Make: Stanford_type	634C
Power	.690V/60Hz 800 Kva.

## MACHINERY SYSTEMS

PUMPS	
Make	Azcue

BILGE WATER SEPARATOR	
Make:Detegasa-type	Delta Ows-2

STARTING AIR COMPRESSOR (2)	
Make: Sperre-type	HL2/105

SERVICE AIR COMPRESSOR (1)	
Make: Tamrotor-type	EMH 35-8 EANA
Capacity	5,26 m <sup>3</sup>

LUB-OIL SEPARATOR (2)	
Make:Alfa Laval-Type	MMPX 404 SGP-11

FUEL OIL SEPARATOR (2)	
Make:Alfa Laval-Type	MMPX 404 SGP-11

FRESH WATER GENERATORS (2)	
Make:Aquamar-Model: 25/2-Cap: 25T/day each	

INCINERATOR (1)	
Make:Detegasa-Type	DELTA IRL-50
Capacity	500.000 Kcal/h

ANTI-HELLING SYSTEM (1)	
Make:Framo-Type	RBP 300-Flow1.000 m <sup>3</sup> /h

TANK SOUNDING SYSTEM	
Make	Ariston-Norway

## SHIP'S SYSTEM

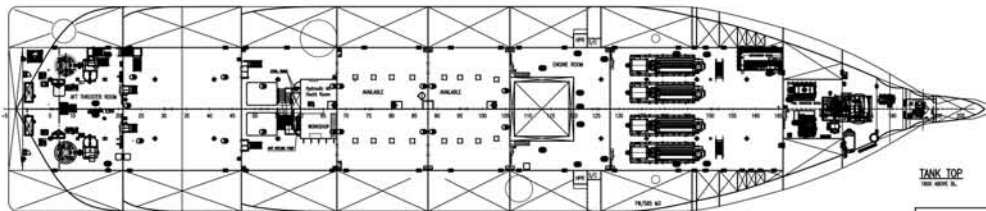
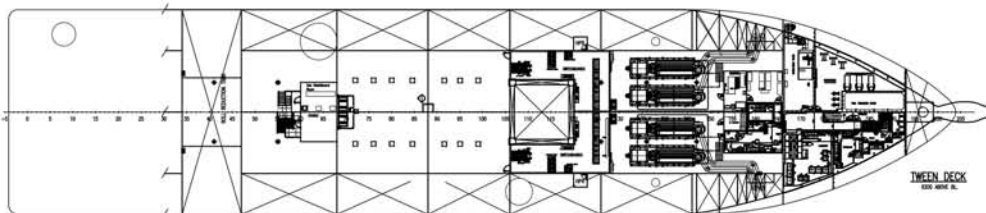
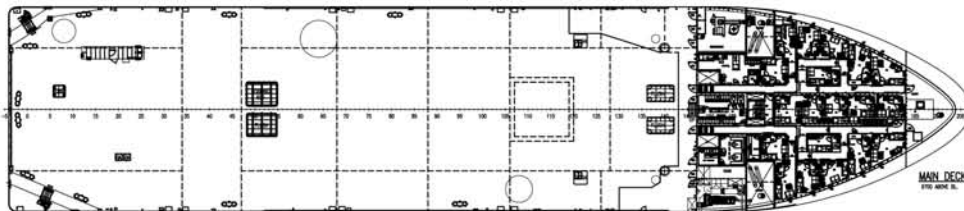
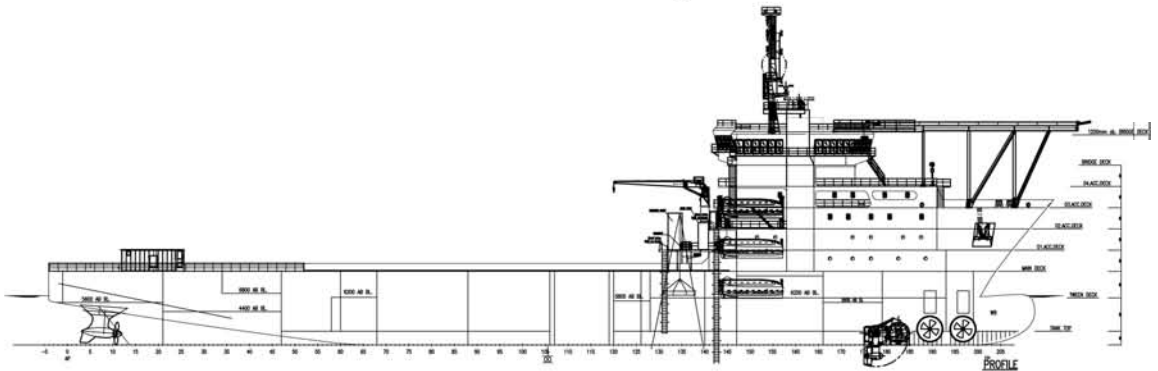
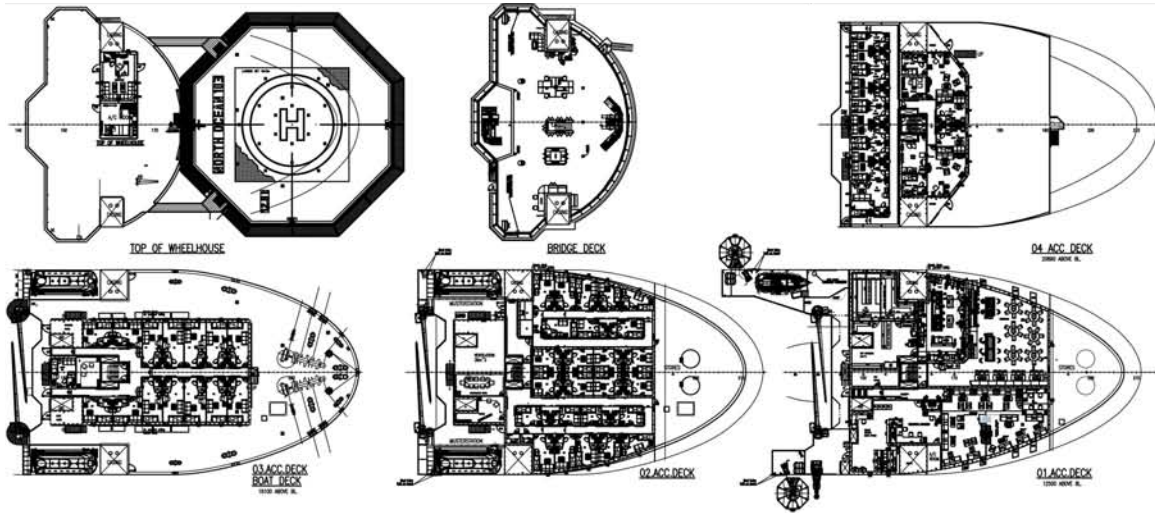
Automation System	Wartsila Automation
Electric installation company	Isolux
Ventilation/Air conditioning system	Novenco
Accommodation	Regenasa



**MetalSHIPS**  
& DOCKS, S.A.U.

# "NORTH OCEAN 103" ("APACHE II")

CONSTRUCTION UMBILICAL VESSEL



PRINCIPAL PARTICULARS  
 LENGTH OVER ALL: 133,60 M  
 L.O.A. WITH HELIDECK & STINGER: 136,60 M  
 LENGTH BETWEEN PERP.: 120,40 M  
 BREADTH MOULDED: 27,00 M  
 DEPTH MAIN DECK: 9,70 M  
 MAX DRAFT: 6,85 M  
 FRAME SPACING: 0,60 M  
 ACCOMMODATION FOR 120 PERS.  
 24 x 1 MAN CABINS  
 48 x 2 MAN CABINS

IMO 9397951 287.101.001

NO.	DESCRIPTION	DATE	BY	CHECKED BY
1	GENERAL ARRANGEMENT	1:200	AD	03.03.06
SAW 2020		Project No: S340/07-001		
UMBILICAL LAYING VESSEL		Drawing No: D879		
		Scale: 1:1		

