

"LAY VESSEL NORTH OCEAN 105"



PRINCIPAL PARTICULARS

Length ovel all.....132,44 m.
 Length between p.p.120,40 m.
 Breadth moulded.....27,00 m.
 Depth main deck.....9,70 m.
 Depth tween deck.....6,20 m.
 Max. Draft.....6,85 m.
 Gross tonnage.....11.000 T.

CAPACITIES

Deck Area.....2.000 m²
 Fuel-Oil.....2.000 m³
 Fresh Water.....1.000 m³
 Ballast Water.....6.500 m³

CLASS

Det Norske veritas+ 1 A1, HELIDECK, DYMPOS, AUTR, DK, (+), EO, CLEAN, CONF(V3) NAUT-OSV

ACCOMMODATION

Total number of crew.....120 persons

EQUIPMENT FOR CARGO

DECK CRANE (1)
 Make: *National oilwell*.....OC4500BSCE
 Max. Lifting capacity.....400 T.

DECK CRANE (2)
 Make: *National oilwell*.....AHC Knuckle Boom
 Max. Lifting capacity.....100 T.

PROVISION CRANE (2)

Make: *TTS* - Type.....GP-80-2-12
 Max. Lifting capacity.....2 T. a 12 m

MOON POOL HATCH

Designed by.....*SP Consultores*
 Size.....6,50 x 7,70 m.

DECK MACHINERY

ANCHOR MOORING WINCH (2) Electro-hydraulic
 Make: *Ibercisa*.....MAN-H/H/60
CAPSTAN (2) Electro-Hydraulic
 Make: *Ibercisa*.....MAN-H/50

MANOEUVRING SYSTEM

AZIMUTH THRUSTER (2)
 Make: *Rolls-Royce* - Type.....AZP-120
 Power.....3.500 Kw.
 Gear reduction.....2,26:1
 Motor Make.....*Alconza*

TUNNEL THRUSTER (2)
 Make: *Rolls-Royce* - Type.....TT-2400
 Power.....1.500 Kw.
 Motor Make.....*Alconza*
 Propeller diam.....2.400 mm.

SWING THRUSTER (1)
 Make: *Rolls-Royce* - Type.....TCNS-92/62
 Power.....1.500 Kw.
 Motor Make.....*Alconza*

DYNAMIC POSITIONING SYSTEM

Make: *Kongsberg Simrad* - Type.....DPC21

DIESEL ELECTRIC PROPULSION SYSTEMS

ENGINES (4)
 Make: *Wartsila* - Type.....7L32
 Power.....3.360 Kw at 720 r.p.m.

GENERATOR (4)
 Make: *Alconza* - Type.....NIR 7185 A-10LW
 Power.....3.250 Kva at 720 r.p.m. 690V/60Hz.

HARBOUR/EMERGENCY GENERATOR

ENGINE
 Make: *Caterpillar* - Type.....C-32
 Power.....994Kw. at 1.800 rpm.

GENERATOR

Make: *Leroy Somer* - Type.....LSA M-50.2 M-6
 Power.....690V/60Hz.....952 Kw.

MACHINERY SYSTEMS

PUMPS

Make: *Azcue*

BILGE WATER SEPARATOR

Make: *Facet Iberica* - Type.....CPS-10B-2,5

STARTING AIR COMPRESSOR (2)

Make: *Sperre* - Type.....HL2/160

SERVICE AIR COMPRESSOR (1)

Make: *Tamrotor* - Type.....TMC-65-9
 Capacity.....8,27 m³

LUB-OIL SEPARATOR (2)

Make: *Alfa Laval* - Type.....PU-150

FUEL OIL SEPARATOR (2)

Make: *Alfa Laval* - Type.....PU-150

FRESH WATER GENERATORS (2)

Make: *Aquamar* - Model: 25/2
 Capacity.....25T/day each

INCINERATOR (1)

Make: *Detegasa* - Type.....DELTA IRL-65
 Capacity.....650.000 Kcal/h

ANTI-HELLING SYSTEM (1)

Make: *Framo* - Type.....RBP 300
 Flow.....1.000 m³/h

TANK SOUNDING SYSTEM

Make: *Ariston-Norway*

SHIP'S SYSTEM

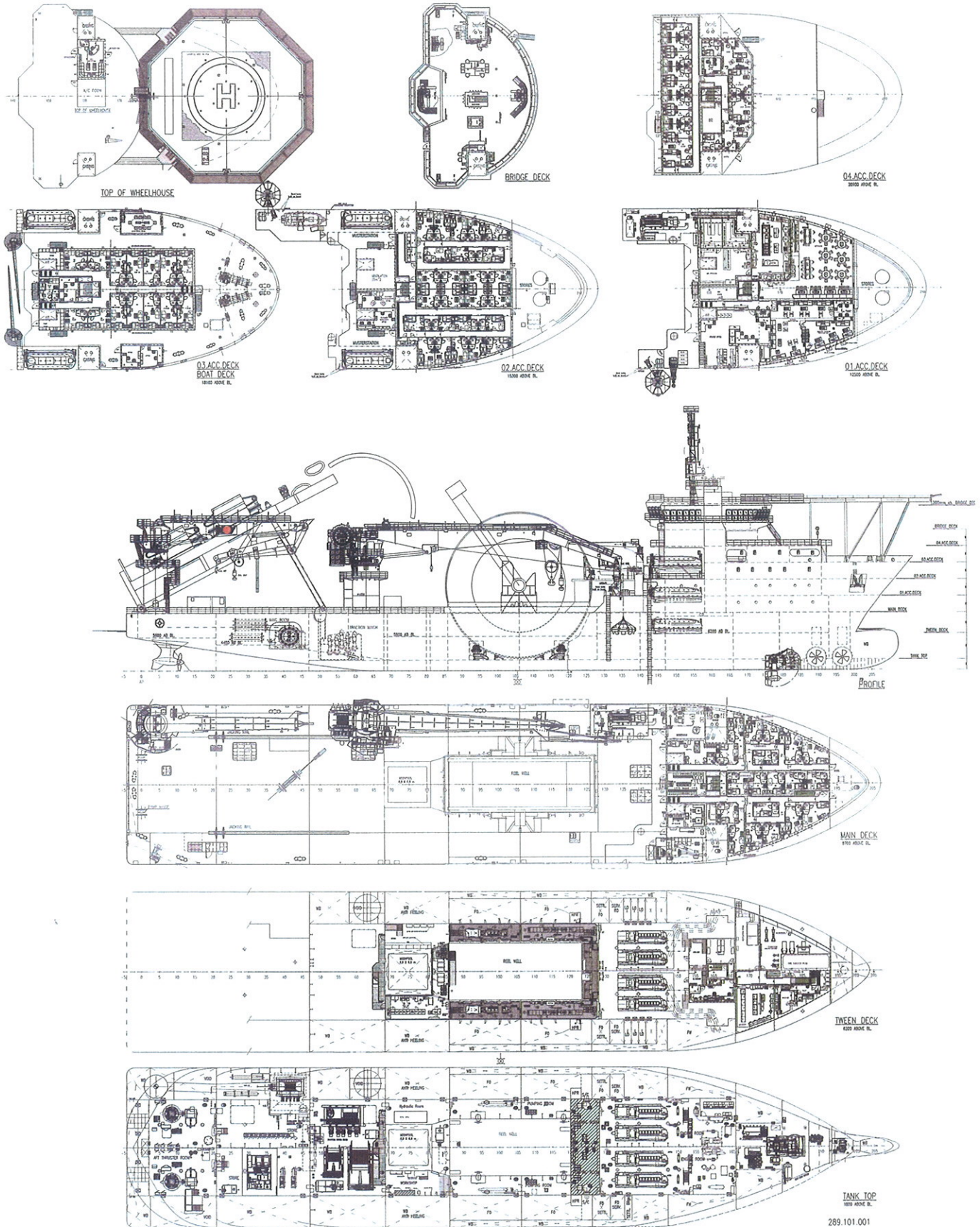
Automation system.....*AKER/Stadt Automation*
 Electric installation company.....*Isolux*
 Ventilation/Air conditioning system.....*Novenco*
 Accommodation.....*Regenasa*



MetalSHIPS
 & DOCKS, S.A.U.

"LAY VESSEL NORTH OCEAN 105"

CONSTRUCTION PIPELAY VESSEL



PRINCIPAL PARTICULARS

LENGTH OVER ALL:	132,44 M
L.O.A. WITH HELIDECK:	135,65 M
LENGTH BETWEEN PERP:	120,40 M
BREADTH MOULDED:	27,00 M
DEPTH MAIN DECK:	9,70 M
MAX DRAFT:	6,85 M
FRAME SPACING:	0,60 M
ACCOMMODATION FOR 120 PERS.	
24 x 1 MAN CABINS	
48 x 2 MAN CABINS	

NO.	DESCRIPTION	DATE	BY	CHECKED	APPROVED
1	GENERAL ARRANGEMENT	20.10.09			
2	SAW 2022 PIPELAY VESSEL				
3	PROJECT NO. S434/09-106				
4	DRIVING NO. E774				



MetalSHIPS
& DOCKS, S.A.U.
GRUPO RODMAN